

**RNConsult WS - InscriptionService
Cookbook
Version 1.5**

This document is provided to you free of charge by the

eHealth platform

**Willebroekkaai 38 – 1000 Brussel
38, Quai de Willebroeck – 1000 Bruxelles**

All are free to circulate this document with reference to the URL source.

Table of contents

Table of contents	2
1. Document management	4
1.1 Document history.....	4
2. Introduction	5
2.1 Goal of the service	5
2.2 Goal of the document	5
2.3 External document references.....	5
3. Support	6
3.1 Helpdesk eHealth platform	6
3.1.1 Certificates.....	6
3.1.2 For issues in production	6
3.1.3 For issues in acceptance	6
3.1.4 For business issues	6
3.2 Status	6
3.3 Authorization from sectoral committee	6
4. Global overview	7
5. Requirements	8
5.1 Technical requirements.....	8
5.1.1 WS-I Basic Profile 1.1.....	8
5.1.2 Tracing	8
6. Description of xml messages	9
6.1 AddInscription.....	9
6.1.1 Request.....	9
6.1.2 Response	10
6.2 RemoveInscription	11
6.2.1 Request.....	11
6.2.2 Response	13
6.3 GetExpiringInscriptions	14
6.3.1 Request.....	14
6.3.2 Response	15
6.4 GetInscriptions	16
6.4.1 Request.....	16
6.4.2 Response	17
7. Status	18
7.1 Success response.....	18
7.2 Business errors	18
7.2.1 AddInscription	18
7.2.2 RemoveInscription.....	19
7.2.3 GetExpiringInscriptions.....	20
7.2.4 GetInscriptions	20
7.3 Technical errors.....	21



8.	Test and release procedure	23
8.1	Procedure.....	23
8.1.1	Initiation	23
8.1.2	Development and test procedure	23
8.1.3	Release procedure.....	23
8.1.4	Operational follow-up	23
9.	Example	24
9.1	AddInscription.....	24
9.1.1	Request.....	24
9.1.2	Success response	24
9.2	RemoveInscription	24
9.2.1	Request.....	24
9.2.2	Success response	24
9.2.3	Business error response	25
9.2.4	Technical error response	25
9.3	GetExpiringInscriptions	26
9.3.1	Request.....	26
9.3.2	Success response	26
9.4	GetInscriptions	27
9.4.1	Request.....	27
9.4.2	Success response	27
10.	Test cases	28
10.1	Register a person	28
10.2	Register a cancelled person	28
10.3	Register a replaced person.....	29
10.4	Register a person that does NOT exist in CBSS register	29
10.5	Register a person with an invalid identifier	30
10.6	Remove a registered person	31
10.7	Remove a NOT registered person	31

To the attention of: “IT expert” willing to integrate this web service.

1. Document management

1.1 Document history

Version	Date	Author	Description of changes / remarks
1.0	08/06/2020	eHealth platform	Initial version
1.1	16/10/2020	eHealth platform	Add new section : test cases
1.2	18/11/2021	eHealth platform	Update section test cases
1.3	20/07/2022	eHealth platform	Add section : Status Updated section: Tracing
1.4	11/04/2023	eHealth platform	Add section: Example
1.5	19/02/2024	eHealth platform	New operations: <i>GetExpiringInscriptions</i> <i>GetInscriptions</i>

2. Introduction

2.1 Goal of the service

The service InscriptionService aims at:

- registering a new person in order to receive the mutation(s)
- deleting an existing registration for a person if you do not want to receive notifications on the mutation regarding this person.

This service is available to all healthcare organisations with a valid eHealth certificate.

2.2 Goal of the document

This document is not a development or programming guide for internal applications. Instead, it provides functional and technical information and allows an organization to integrate and use the eHealth platform service.

However, in order to interact in a smooth, homogeneous and risk controlled way with a maximum of partners, these partners must commit to comply with the requirements of specifications, data format and release processes of the eHealth platform as described in this document.

Technical and business requirements must be met in order to allow the integration and validation of the eHealth platform service in the client application.

2.3 External document references

All documents can be found through the internet. They are available to the public, but not supported by the eHealth platform.

ID	Title	Source	Date	Author
1	Basic Profile Version 1.1	http://www.ws-i.org/Profiles/BasicProfile-1.1-2004-08-24.html	24/08/2004	Web Services Interoperability Organization

3. Support

3.1 Helpdesk eHealth platform

3.1.1 Certificates

In order to access the secured eHealth platform environment you have to obtain an eHealth platform certificate, used to identify the initiator of the request. In case you do not have one, please consult the chapter about the eHealth Certificates on the portal of the eHealth platform

- <https://www.ehealth.fgov.be/ehealthplatform/nl/ehealth-certificaten>
- <https://www.ehealth.fgov.be/ehealthplatform/fr/certificats-ehealth>

For technical issues regarding eHealth platform certificates

- Acceptance: acceptance-certificates@ehealth.fgov.be
- Production: support@ehealth.fgov.be

3.1.2 For issues in production

eHealth platform contact centre:

- Phone: 02 788 51 55 (on working days from 7 am till 8 pm)
- Mail: support@ehealth.fgov.be
- Contact Form :
 - <https://www.ehealth.fgov.be/ehealthplatform/nl/contact> (Dutch)
 - <https://www.ehealth.fgov.be/ehealthplatform/fr/contact> (French)

3.1.3 For issues in acceptance

Integration-support@ehealth.fgov.be

3.1.4 For business issues

- regarding an existing project: the project manager in charge of the application or service
- regarding a new project or other business issues: info@ehealth.fgov.be

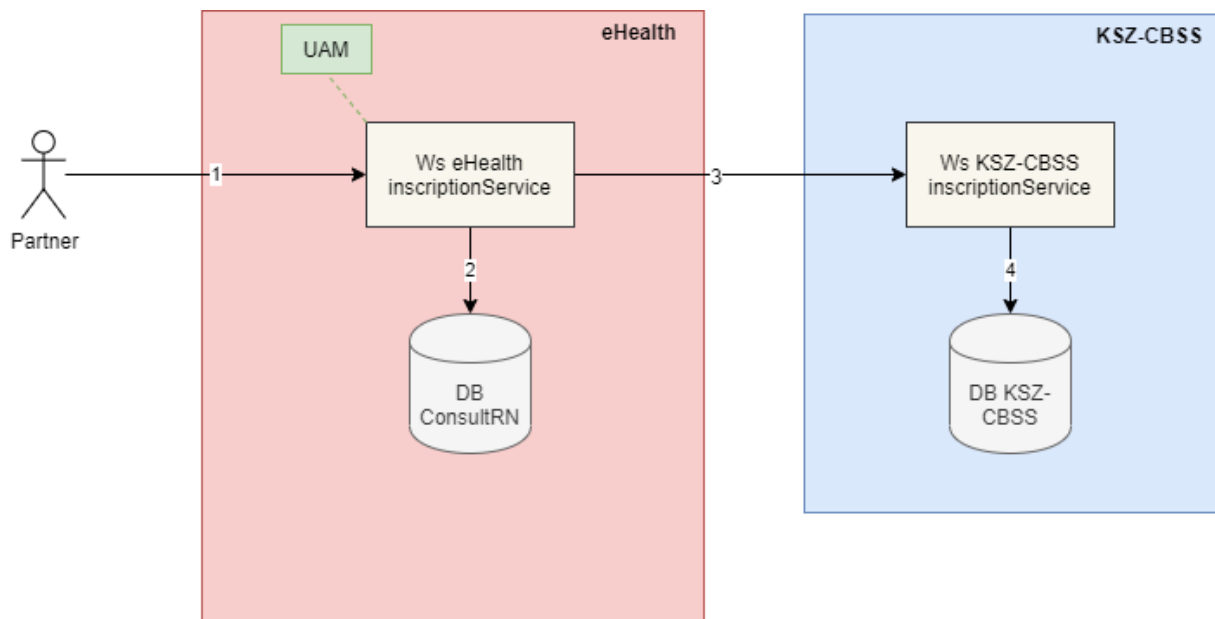
3.2 Status

The website <https://status.ehealth.fgov.be> is the monitoring and information tool for the ICT functioning of the eHealth services that are partners of the Belgian eHealth system.

3.3 Authorization from sectoral committee

The use of ConsultRN requires authorisation from the sectorial committee. Only then you will receive an applicationID that will be used to access with specific rights to this service.

4. Global overview



- 1) The institution (identified by a CBE, NIHII or EHP number) authenticates via its software to the eHealth platform and sends a request to the eHealth InscriptionService service.
Before granting access the service, the eHealth platform performs the following checks:
 - Authentication of the applicant via their eHealth certificate
 - The applicationID is well configured in the ConsultRN database and linked to the organization.
- 2) Once the verification has been performed, the eHealth request is transformed into a CBSS request and is sent to the KSZ-BCSS InscriptionService service.
- 3) This service registers/unregisters the patient in the KSZ-BCSS database on behalf of eHealth.
- 4) Once the registration completed, the patient is registered/unregistered in the RNConsult database for a certain period.
- 5) eHealth returns information about the registration/unsubscription to the institution.

Note: This service is NOT accessible to individual care providers.

5. Requirements

The call to the service *InscriptionService* is subject to several conditions:

- An authorization of the sectoral committee and the compliance with the integration procedure. By applying this procedure, the eHealth platform will provide you with your **applicationID**, which is used by the eHealth platform to grant specific rights:
- An eHealth certificate, used to identify the initiator of the request. If you do not have one, please refer to the section “Basisdiensten” (NL) or “Services de base” (F) on the portal of the eHealth platform at <https://www.ehealth.fgov.be/ehealthplatform/>
- Time synchronization: the servers of the eHealth platform are synchronized to a pool of global servers using NTP protocol. Partner’s clock cannot be offsetted by more than 60 seconds against eHealth’s or the request could be discarded.

5.1 Technical requirements

5.1.1 WS-I Basic Profile 1.1

Your request must be WS-I compliant (See Chap 2.3 - External Document Ref).

5.1.2 Tracing

To use this service, the request SHOULD contain the following two http header values (see RFC <https://datatracker.ietf.org/doc/html/rfc7231#section-5.5.3>):

1. User-Agent: information identifying the software product and underlying technical stack/platform. It MUST include the minimal identification information of the software such that the emergency contact (see below) can uniquely identify the component.
 - a. Pattern: {minimal software information}/{version} {minimal connector information}/{connector-package-version}
 - b. Regular expression for each subset (separated by a space) of the pattern: `[[a-zA-Z0-9-\\]]*\\V[0-9azA-Z-_.]*`
 - c. Examples:
User-Agent: myProduct/62.310.4 Technical/3.19.0
User-Agent: Topaz-XXXX/123.23.X freeconnector/XXXXX.XXX
2. From: email-address that can be used for emergency contact in case of an operational problem.
Examples:
From: info@mycompany.be



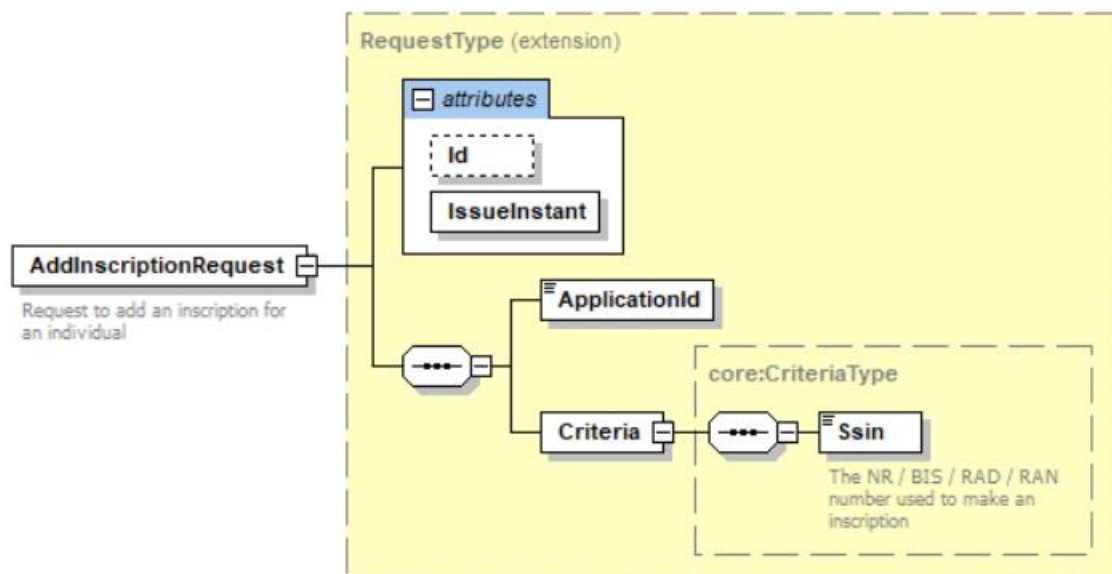
6. Description of xml messages

6.1 AddInscription

This method is used to register an inscription for a person identified by an SSIN number. This inscription is needed if the organisation wants to receive the mutation(s) about the registered person.

Note: The inscription period in order to receive these mutations will be defined according to the deliberation of sectorial committee.

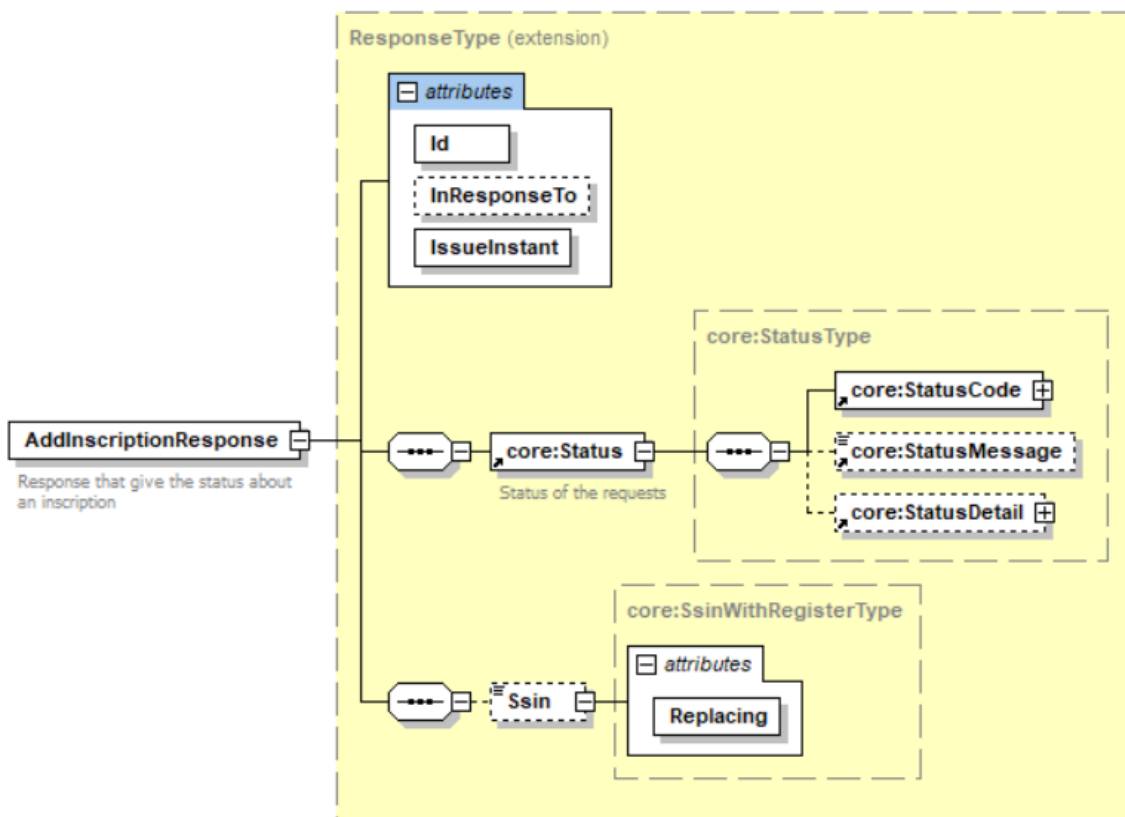
6.1.1 Request



Field name	Description
@Id	This attribute contains the number identifying the request. Remark: This field is optional but we recommend adding an identifier to facilitate the follow-up in case of business/technical issue.
@issue Instant	This attribute contains the timestamp of the request.
ApplicationID	The ApplicationID contains a number given by eHealth identifying the organization and the authorization granted to this organization for a specific purpose. (Same format as an SSIN).

Criteria/Ssin	<p>This field contains the SSIN number of the person to request information.</p> <p>Structure which must be respected</p> <pre> <xsd:pattern value="[0-9][0-9](((0[0-9]) ([1][0-2]))((0-2)[0-9]) ([3][0-1]))((0-9){2}[1-9]) ([0-9][1-9][0-9]) ([1-9][0-9]{2}))((0-8)[0-9]) ([9][0-7]))"> <xsd:annotation> <xsd:documentation xml:lang="FR">Registre National</xsd:documentation> </xsd:annotation> </xsd:pattern> <xsd:pattern value="[0-9][0-9](((2[0-9]) ([3][0-2]))((0-2)[0-9]) ([3][0-1]))[0-9]{3}((0-8)[0-9]) ([9][0-7]))"> <xsd:annotation> <xsd:documentation xml:lang="FR">Registre Bis : numero Bis</xsd:documentation> <xsd:documentation xml:lang="NL">Bis register : Bisnummer</xsd:documentation> </xsd:annotation> </xsd:pattern> <xsd:pattern value="[0-9][0-9](((4[0-9]) ([5][0-2]))((0-2)[0-9]) ([3][0-1]))[0-9]{3}((0-8)[0-9]) ([9][0-7]))"> <xsd:annotation> <xsd:documentation xml:lang="FR">Registre Bis : numero TER</xsd:documentation> <xsd:documentation xml:lang="NL">Bisregister : Ternummer</xsd:documentation> </xsd:annotation> </xsd:pattern> </pre>
---------------	---

6.1.2 Response

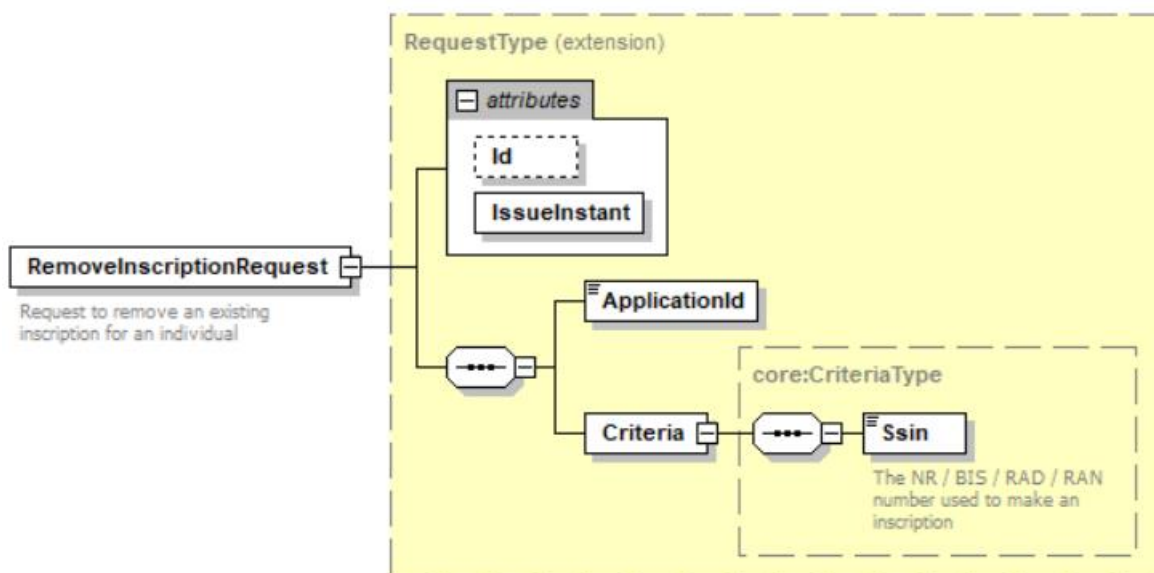


Field name	Description
@Id	This attribute contains the number identifying the response.
@InResponseTo	This attribute contains the number identifying the request.
@IssueInstant	This attribute contains the timestamp of the response.
Status	This block contains information about the status of the response returned. (See section 7)
Ssin	This field contains the current SSIN number of the person: <ul style="list-style-type: none"> • If a SSIN is not replaced by another one, the value will be the SSIN requested. • If a SSIN is replaced by another one, the value will be the current SSIN. The previous one will be present in the attribute <i>Ssin/@Replaces</i>.
Ssin/@Replaces	This field contains the previous SSIN number of the person in case it has been replaced.

6.2 RemoveInscription

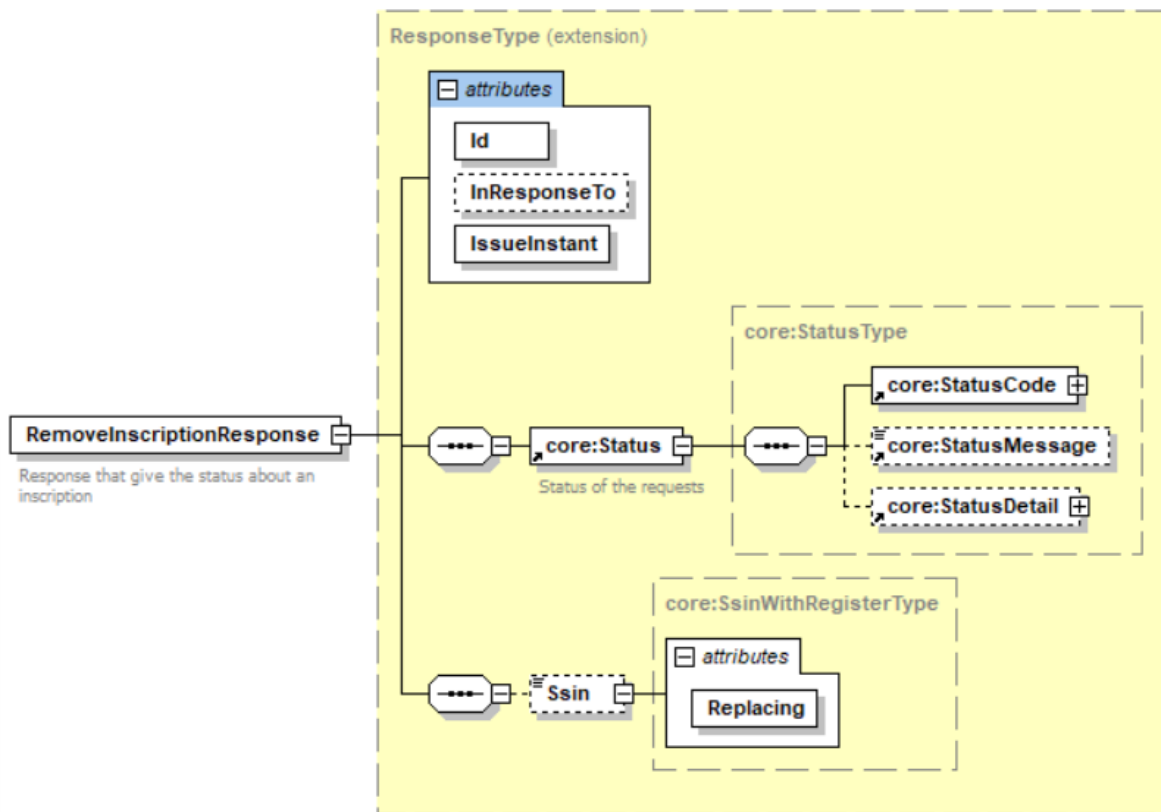
This method is used to remove an existing inscription for a person identified by an SSIN number. When the inscription is removed, you will no longer receive mutations.

6.2.1 Request



Field name	Description
@Id	This attribute contains the number identifying the request. Remark: this field is optional but we recommend adding an identifier to facilitate the follow-up in case of business/technical issue.
@issue Instant	This attribute contains the timestamp of the request.
ApplicationID	The ApplicationID contains a number given by eHealth identifying the organization and the authorization granted to this organization for a specific purpose. (Same format as an SSIN)
Criteria/SSin	<p>This field contains the list of SSIN number of the person whom information is requested.</p> <p>Structure to be respected:</p> <pre> <xsd:pattern value="[0-9][0-9](([0][0-9]) ([1][0-2]))((([0-2][0-9]) ([3][0-1]))((([0-9]{2}[1-9]) ([0-9][1-9][0-9]) ([1-9][0-9]{2}))((([0-8][0-9]) ([9][0-7])))") <xsd:annotation <xsd:documentation xml:lang="FR">Registre National</xsd:documentation> <xsd:documentation xml:lang="NL">Rijksregister</xsd:documentation> </xsd:annotation> </xsd:pattern> <xsd:pattern value="[0-9][0-9](([2][0-9]) ([3][0-2]))((([0-2][0-9]) ([3][0-1]))[0-9]{3}((([0-8][0-9]) ([9][0-7])))") <xsd:annotation <xsd:documentation xml:lang="FR">Registre Bis : numero Bis</xsd:documentation> <xsd:documentation xml:lang="NL">Bis register : Bisnummer</xsd:documentation> </xsd:annotation> </xsd:pattern> <xsd:pattern value="[0-9][0-9](([4][0-9]) ([5][0-2]))((([0-2][0-9]) ([3][0-1]))[0-9]{3}((([0-8][0-9]) ([9][0-7])))") <xsd:annotation <xsd:documentation xml:lang="FR">Registre Bis : numero TER</xsd:documentation> <xsd:documentation xml:lang="NL">Bisregister : Ternummer</xsd:documentation> </xsd:annotation> </xsd:pattern> </pre>

6.2.2 Response

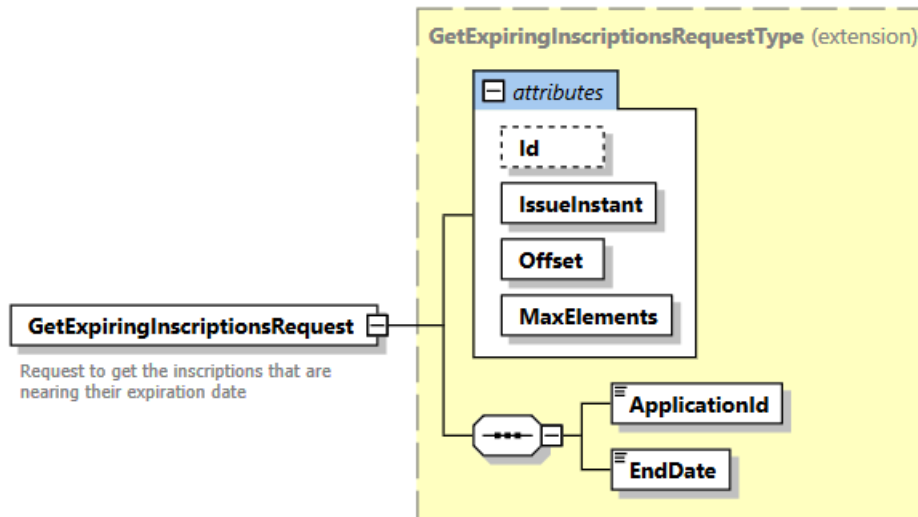


Field name	Description
@Id	This attribute contains the number identifying the response.
@InResponseTo	This attribute contains the number identifying the request.
@IssueInstant	This attribute contains the timestamp of the response.
Status	This block contains information about the status of the response returned. (See section 7)
Ssin	This field contains the current SSIN number of the person: <ul style="list-style-type: none"> • If the SSIN is not replaced by another one, the value will be the SSIN requested. • If the SSIN is replaced by another one, the value will be the current SSIN. The previous SSIN number will be present in the attribute <code>Ssin/@Replacing</code>.
Ssin/@Replacing	This field contains the previous SSIN number of the person in case it has been replaced.

6.3 GetExpiringInscriptions

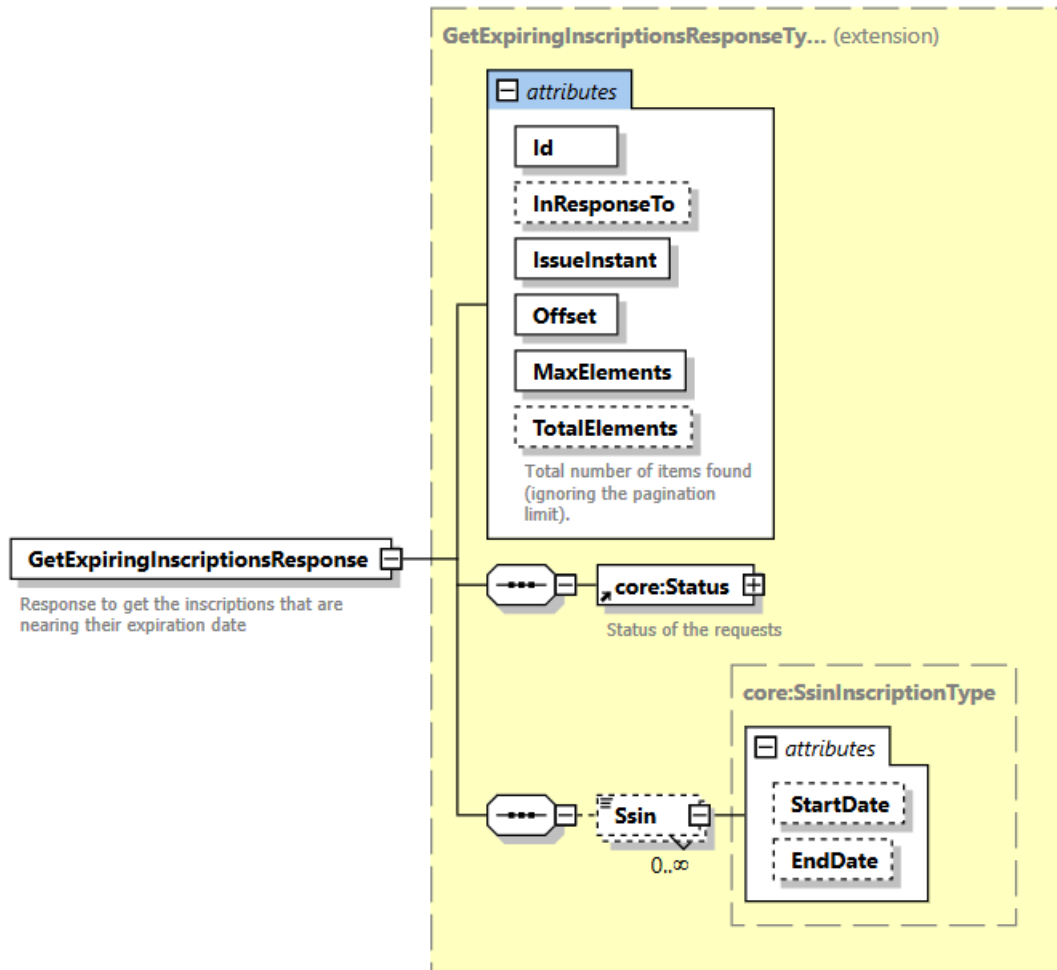
This method is used to retrieve, for a given applicationID, the registered persons whose registrations are nearing their expiration date.

6.3.1 Request



Field name	Description
@Id	This attribute contains the number identifying the request. <u>Remark:</u> This field is optional but we recommend adding an identifier to facilitate the follow-up in case of business/technical issue.
@issue Instant	This attribute contains the timestamp of the request.
@MaxElements	This attribute contains the maximum number of registered persons to retrieve, with a limit of up to 100 per page (offset).
@Offset	This attribute contains the page index, where the first page is indexed as 0.
ApplicationID	The ApplicationID contains a number given by eHealth identifying the organization and the authorization granted to this organization for a specific purpose. (Same format as an SSIN).
EndDate	The EndDate, formatted as "YYYY-MM-DD", contains the inscription expiration date for the registered persons. It must be equal to or later than the current date and less than or equal to the current date + 60 days.

6.3.2 Response



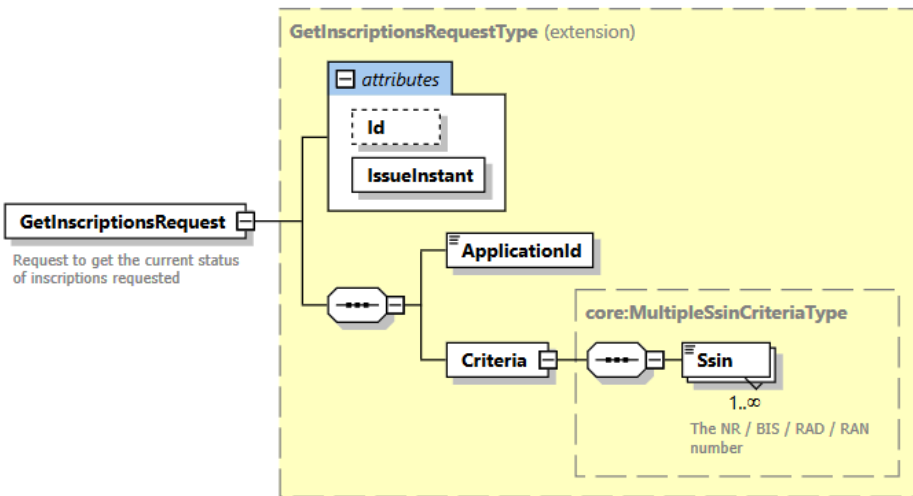
Field name	Description
@Id	This attribute contains the number identifying the response.
@InResponseTo	This attribute contains the number identifying the request.
@IssueInstant	This attribute contains the timestamp of the response.
@Offset	This attribute contains the page index requested.
@MaxElements	This attribute contains the maximum number of registered person requested.
@TotalElements	This attribute contains the total number of registered person retrieved.
Status	This block contains information about the status of the response returned. (See section 7)

Ssin	<p>This field contains the list of registered person where the inscription expiration date are greater than or equal to the current date and less than or equal to the current date + 60 days. For each person, in addition of SSIN, it includes the following information:</p> <ul style="list-style-type: none"> • The @StartDate attribute contains the SSIN inscription date if it exists • The @endDate attribute contains the SSIN expiration date if it exists
------	---

6.4 GetInscriptions

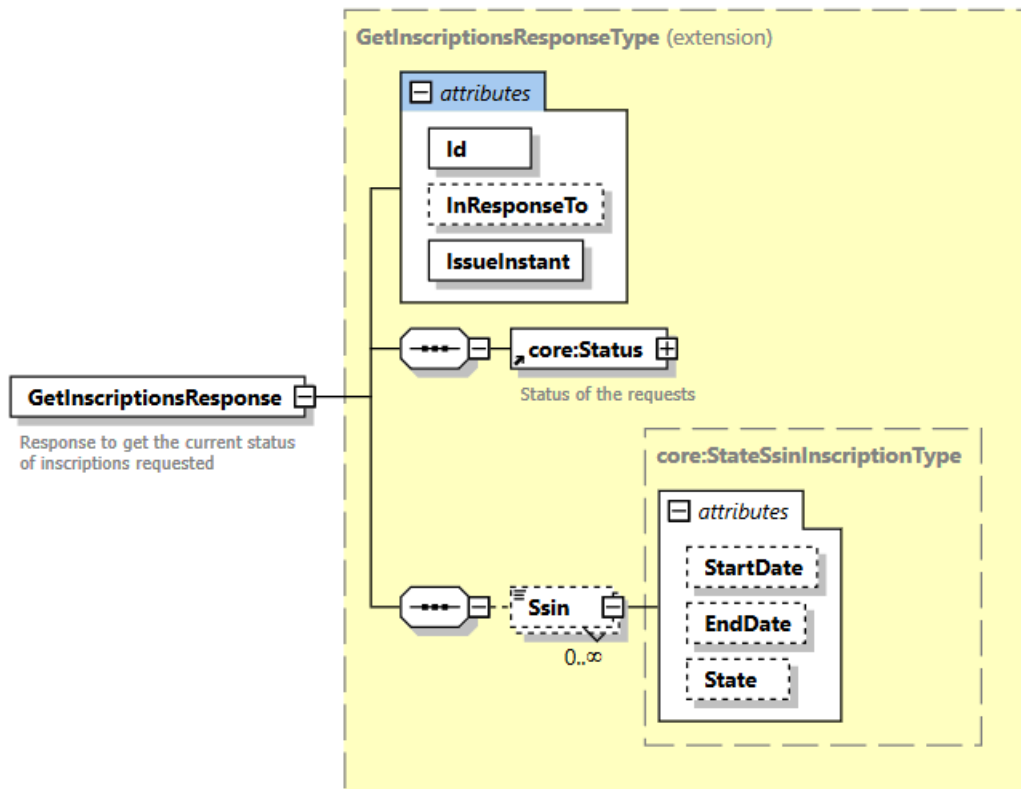
This method is used to retrieve, for a given applicationID, the status of registered persons based on their SSIN.

6.4.1 Request



Field name	Description
@Id	<p>This attribute contains the number identifying the request.</p> <p><u>Remark</u>: This field is optional but we recommend adding an identifier to facilitate the follow-up in case of business/technical issue.</p>
@issue Instant	This attribute contains the timestamp of the request.
ApplicationID	The ApplicationID contains a number given by eHealth identifying the organization and the authorization granted to this organization for a specific purpose. (Same format as an SSIN).
Criteria/Ssin	This field contains the list of SSIN of the persons whose inscription status is requested, with a limit of up to 100 SSIN.

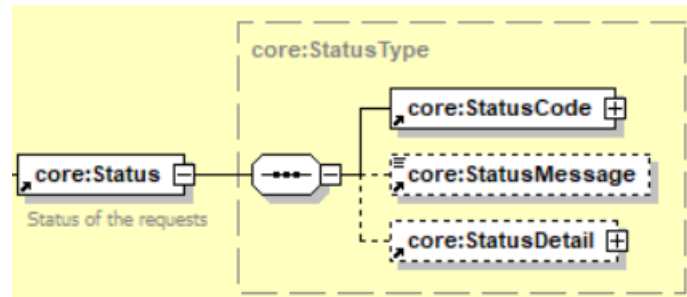
6.4.2 Response



Field name	Description
@Id	This attribute contains the number identifying the response.
@InResponseTo	This attribute contains the number identifying the request.
@IssueInstant	This attribute contains the timestamp of the response.
Status	This block contains information about the status of the response returned. (See section 7)
Ssin	<p>This field contains the list of person requested, with the following information for each SSIN:</p> <ul style="list-style-type: none"> • The @StartDate attribute contains the SSIN inscription date if it exists • The @endDate attribute contains the SSIN expiration date if it exists • The @State contains the SSIN status, which can be one of the following values: <ul style="list-style-type: none"> ○ <i>active</i>: when the SSIN inscription is still active ○ <i>expired</i>: when the SSIN inscription has expired ○ <i>Invalid</i>: when then SSIN doesn't respect the format structure ○ <i>notFound</i> : when the SSIN inscription doesn't exists

7. Status

When you call the service, the information about the success or error from request is contained in a Status element.



Field	Description
StatusCode	This field contains the status code.
StatusMessage	This field contains the description of the status code.
StatusDetail	This field contains additional information about the status.

7.1 Success response

In case of success response, the element status will contain the following information:

```

<ns2:Status>
  <ns2:StatusCode Value="urn:be:fgov:ehhealth:2.0:status:Success"/>
</ns2:Status>
  
```

7.2 Business errors

In the case of a business error, the element status will contain the following information:

7.2.1 AddInscription

Error Description	Element eHealth	Solution
ApplicationID is malformed	<pre> <Status> <StatusCode Value="urn:be:fgov:ehhealth:2.0:status:Requester"> <StatusCode Value="urn:be:fgov:ehhealth:2.0:status:InvalidInput"> </StatusCode> <StatusMessage>The applicationId is malformed</StatusMessage> </Status> </pre>	<p>The applicationID is not valid.</p> <p>Please use a correct application Id in your request.</p>
Ssin is malformed	<pre> <Status> <StatusCode Value="urn:be:fgov:ehhealth:2.0:status:Requester"> <StatusCode Value="urn:be:fgov:ehhealth:2.0:status:InvalidInput"> </StatusCode> <StatusMessage>The ssin is malformed</StatusMessage> </Status> </pre>	<p>The SSIN number is not valid. Please check the structure of the SSIN number.</p>

No right configured to call the web service	<pre><Status> <StatusCode Value="urn:be:fgov:ehhealth:2.0:status:Requester"> <StatusCode Value="urn:be:fgov:ehhealth:2.0:status:RequestDenied"> </StatusCode> <StatusMessage>No right configured to call the web service </StatusMessage> </Status></pre>	The applicationID is not allowed to call the web service. Please refer to the contact center.
Access to this operation is not allowed with the given legal context and credentials	<pre><Status> <StatusCode Value="urn:be:fgov:ehhealth:2.0:status:Requester"> <StatusCode Value="urn:be:fgov:ehhealth:2.0:status:InvalidInput"> </StatusCode> <StatusMessage>Access to this operation is not allowed with the given legal context and credentials</StatusMessage> </Status></pre>	Request to service is forbidden. Please refer to the contact center.
Cause unknown	<pre><Status> <StatusCode Value="urn:be:fgov:ehhealth:2.0:status:Requester "> <StatusCode Value="urn:be:fgov:ehhealth:2.0:status:Indeterminate"> </StatusCode> <StatusMessage>Cause unknown</StatusMessage> </Status></pre>	Please refer to the contact center.

7.2.2 RemoveInscription

Error Description	Element eHealth	Solution
ApplicationID is malformed	<pre><Status> <StatusCode Value="urn:be:fgov:ehhealth:2.0:status:Requester"> <StatusCode Value="urn:be:fgov:ehhealth:2.0:status:InvalidInput"> </StatusCode> <StatusMessage>The applicationId is malformed</StatusMessage> </Status></pre>	The applicationID is not valid. Please use a correct application Id in your request.
SSIN is malformed	<pre><Status> <StatusCode Value="urn:be:fgov:ehhealth:2.0:status:Requester"> <StatusCode Value="urn:be:fgov:ehhealth:2.0:status:InvalidInput"> </StatusCode> <StatusMessage>The ssin is malformed</StatusMessage> </Status></pre>	The SSIN number is not valid. Please check the structure of SSIN number.
No inscription exists	<pre><StatusCode Value="urn:be:fgov:ehhealth:2.0:status:Requester "> <StatusCode Value="urn:be:fgov:ehhealth:2.0:status:InvalidInput"> </StatusCode> <StatusMessage>No inscription exists</StatusMessage></pre>	There is no existing inscription for the person.
No right configured to call the web service	<pre><Status> <StatusCode Value="urn:be:fgov:ehhealth:2.0:status:Requester"> <StatusCode Value="urn:be:fgov:ehhealth:2.0:status:RequestDenied"> </StatusCode> <StatusMessage>No right configured to call the web service </StatusMessage> </Status></pre>	The applicationID is not allowed to call the web service. Please refer to the contact center.
Access to this operation is not allowed with the given legal context and credentials	<pre><Status> <StatusCode Value="urn:be:fgov:ehhealth:2.0:status:Requester"> <StatusCode Value="urn:be:fgov:ehhealth:2.0:status:InvalidInput"> </StatusCode> <StatusMessage>Access to this operation is not allowed with the given legal context and credentials</StatusMessage> </Status></pre>	Request to service is forbidden. Please refer to the contact center.
Cause unknown	<pre><Status> <StatusCode Value="urn:be:fgov:ehhealth:2.0:status:Requester "> <StatusCode Value="urn:be:fgov:ehhealth:2.0:status:Indeterminate"> </StatusCode> <StatusMessage>Cause unknown</StatusMessage> </Status></pre>	Please refer to the contact center.

7.2.3 GetExpiringInscriptions

Error Description	Element eHealth	Solution
ApplicationID is malformed	<pre><Status> <StatusCode Value="urn:be:fgov:ehhealth:2.0:status:Requester"> <StatusCode Value="urn:be:fgov:ehhealth:2.0:status:InvalidInput"> </StatusCode> <StatusMessage>The applicationId is malformed</StatusMessage> </Status></pre>	<p>The applicationID is not valid.</p> <p>Please use a correct application Id in your request.</p>
No right configured to call the web service	<pre><Status> <StatusCode Value="urn:be:fgov:ehhealth:2.0:status:Requester"> <StatusCode Value="urn:be:fgov:ehhealth:2.0:status:RequestDenied"> </StatusCode> <StatusMessage>No right configured to call the web service </StatusMessage> </Status></pre>	<p>The applicationID is not allowed to call the web service. Please refer to the contact center.</p>
Access to this operation is not allowed with the given legal context and credentials	<pre><Status> <StatusCode Value="urn:be:fgov:ehhealth:2.0:status:Requester"> <StatusCode Value="urn:be:fgov:ehhealth:2.0:status:InvalidInput"> </StatusCode> <StatusMessage>Access to this operation is not allowed with the given legal context and credentials</StatusMessage> </Status></pre>	<p>Request to service is forbidden. Please refer to the contact center.</p>
The MaxElement should be greater than 0	<pre><StatusCode Value="urn:be:fgov:ehhealth:2.0:status:Requester "> <StatusCode Value="urn:be:fgov:ehhealth:2.0:status:InvalidInput"> </StatusCode> <StatusMessage>The MaxElement should be greater than 0</StatusMessage></pre>	<p>The maxElement value must be greater than or equal to 0.</p>
The MaxElement has a limit of 100 elements	<pre><StatusCode Value="urn:be:fgov:ehhealth:2.0:status:Requester "> <StatusCode Value="urn:be:fgov:ehhealth:2.0:status:InvalidInput"> </StatusCode> <StatusMessage>The MaxElement has a limit of 100 elements</StatusMessage></pre>	<p>The maxElement value must be less than or equal to 100</p>
The offset should be greater than or equal to 0	<pre><StatusCode Value="urn:be:fgov:ehhealth:2.0:status:Requester "> <StatusCode Value="urn:be:fgov:ehhealth:2.0:status:InvalidInput"> </StatusCode> <StatusMessage>The offset should be greater than or equal to 0</StatusMessage></pre>	<p>The offset value must be greater than or equal to 0.</p>
The end date should be within 60 days from the current date	<pre><StatusCode Value="urn:be:fgov:ehhealth:2.0:status:Requester "> <StatusCode Value="urn:be:fgov:ehhealth:2.0:status:InvalidInput"> </StatusCode> <StatusMessage>The end date should be within 60 days from the current date</StatusMessage></pre>	<p>The end date should be within 60 days from the current date</p>
Cause unknown	<pre><Status> <StatusCode Value="urn:be:fgov:ehhealth:2.0:status:Requester "> <StatusCode Value="urn:be:fgov:ehhealth:2.0:status:Indeterminate"> </StatusCode> <StatusMessage>Cause unknown</StatusMessage> </Status></pre>	<p>Please refer to the contact center.</p>

7.2.4 GetInscriptions

Error Description	Element eHealth	Solution
ApplicationID is malformed	<pre><Status> <StatusCode Value="urn:be:fgov:ehhealth:2.0:status:Requester"> <StatusCode Value="urn:be:fgov:ehhealth:2.0:status:InvalidInput"> </StatusCode> <StatusMessage>The applicationId is malformed</StatusMessage> </Status></pre>	<p>The applicationID is not valid.</p> <p>Please use a correct application Id in your request.</p>



No right configured to call the web service	<pre><Status> <StatusCode Value="urn:be:fgov:health:2.0:status:Requester"> <StatusCode Value="urn:be:fgov:health:2.0:status:RequestDenied"> </StatusCode> <StatusMessage>No right configured to call the web service </StatusMessage> </Status></pre>	The applicationID is not allowed to call the web service. Please refer to the contact center.
Access to this operation is not allowed with the given legal context and credentials	<pre><Status> <StatusCode Value="urn:be:fgov:health:2.0:status:Requester"> <StatusCode Value="urn:be:fgov:health:2.0:status:InvalidInput"> </StatusCode> <StatusMessage>Access to this operation is not allowed with the given legal context and credentials</StatusMessage> </Status></pre>	Request to service is forbidden. Please refer to the contact center.
The maximum number of ssins is 100	<pre><Status> <StatusCode Value="urn:be:fgov:health:2.0:status:Requester"> <StatusCode Value="urn:be:fgov:health:2.0:status:InvalidInput"> </StatusCode> <StatusMessage>The maximum number of ssins is 100</StatusMessage> </Status></pre>	The number of SSIN in the input list must be less than or equal to 100.
Cause unknown	<pre><Status> <StatusCode Value="urn:be:fgov:health:2.0:status:Requester "> <StatusCode Value="urn:be:fgov:health:2.0:status:Indeterminate"> </StatusCode> <StatusMessage>Cause unknown</StatusMessage> </Status></pre>	Please refer to the contact center.

7.3 Technical errors

In the case of a technical error, a SOAP fault exception is returned with the following status (See table below):

```
<ns2:Status>
  <ns2:StatusCode Value="urn:be:fgov:health:2.0:status:Responder"/>
</ns2:Status>
```

If an error occurs, please FIRST verify your request.

The following table contains a list of common system error codes for the eHealth Service Bus.

Error code	Component	Description	Solution
SOA-00001	Not determined	Service error	This is the default error sent to the consumer in case more details are missing.
SOA-01001	Consumer	Service call not authenticated	Information provided by security: <ul style="list-style-type: none"> • or the consumer could not be identified; • or the credentials provided are not correct.
SOA-01002	Consumer	Service call not authorized	The consumer is identified and authenticated, but is not allowed to call the given service.



SOA-02001	Provider	Service not available. Please contact service desk	An unexpected error has occurred. <ul style="list-style-type: none"> Retries will not work. Service desk may help with root cause analysis.
SOA-02002	Provider	Service temporarily not available. Please try later	An unexpected error has occurred. <ul style="list-style-type: none"> Retries should work. If the problem persists service desk may help.
SOA-03001	Consumer	Malformed message	This is the default message for content related errors in case more details are missing.
SOA-03002	Consumer	Message must be SOAP	Message does not respect the SOAP standard.
SOA-03003	Consumer	Message must contain SOAP body	Message respects the SOAP standard, but body is missing.
SOA-03004	Consumer	WS-I compliance failure	Message does not respect the WS-I standard.
SOA-03005	Consumer	WSDL compliance failure	Message is not compliant with WSDL in Registry/Repository.
SOA-03006	Consumer	XSD compliance failure	Message is not compliant with XSD in Registry/Repository.
SOA-03007	Consumer	Message content validation failure	From the message content (conform XSD): <ul style="list-style-type: none"> Extended checks on the element format failed. Cross-checks between fields failed.

8. Test and release procedure

8.1 Procedure

This chapter explains the procedures for testing and releasing an application in acceptance or production.

8.1.1 Initiation

If you intend to use the eHealth platform service, please contact info@ehealth.fgov.be. The project department will provide you with the necessary information and mandatory documents.

8.1.2 Development and test procedure

You have to develop a client in order to connect to our WS. Most of the required info on how to integrate is published on the portal of the eHealth platform.

Upon request, the eHealth platform provides you in some cases with test cases allowing you to test your client before the release in the acceptance environment.

8.1.3 Release procedure

When development tests are successful, you can request to access the acceptance environment of the eHealth platform. From this moment, you start the integration and acceptance tests. The eHealth platform suggests testing during minimum one month.

After successful acceptance tests, the partner sends his test and performance results with a sample of “eHealth request” and “eHealth answer” by email to his point of contact at the eHealth platform.

Then the eHealth platform and the partner agree on a release date. The eHealth platform prepares the connection to the production environment and provides the partner with the necessary information. During the release day, the partner provides the eHealth platform with feedback on the test and performance tests.

For further information and instructions, please contact: integration-support@ehealth.fgov.be.

8.1.4 Operational follow-up

Once in production, the partner using the eHealth platform service for one of his applications will always test first in the acceptance environment before releasing any adaptations of its application in production. In addition, he will inform the eHealth platform on the progress and test period.

9. Example

9.1 AddInscription

9.1.1 Request

```
<urn:AddInscriptionRequest Id="idRequest" IssueInstant="2020-06-05T11:03:59.810+02:00">
  <urn:ApplicationId>XXXXXXXXXXXX</urn:ApplicationId>
  <urn:Criteria>
    <Ssin>12345678910</Ssin>
  </urn:Criteria>
</urn:AddInscriptionRequest>
```

9.1.2 Success response

```
<ns3:AddInscriptionResponse Id="Id-XXXXXX" InResponseTo="idRequest" IssueInstant="2020-06-05T11:04:01.688+02:00" xmlns:ns2="urn:be:fgov:health:commons:core:v2" xmlns:ns3="urn:be:fgov:health:rn:inscriptionservice:protocol:v1" xmlns:ns5="urn:be:fgov:health:rn:registries:commons:v1" xmlns:ns6="urn:be:fgov:health:rn:commons:business:v1" xmlns:ns7="urn:be:fgov:health:errors:soa:v1" xmlns:ns8="urn:be:fgov:health:errors:service:v1">
  <ns2:Status>
    <ns2:StatusCode Value="urn:be:fgov:health:2.0:status:Success"/>
  </ns2:Status>
  <ns3:Ssin Replacing="false">12345678910</ns3:Ssin>
</ns3:AddInscriptionResponse>
```

9.2 RemoveInscription

9.2.1 Request

```
<urn:RemoveInscriptionRequest Id="Id-XXXXXX" IssueInstant="2020-06-05T13:47:16.555+02:00">
  <urn:ApplicationId>XXXXXXXXXXXX</urn:ApplicationId>
  <urn:Criteria>
    <Ssin>12345678910</Ssin>
  </urn:Criteria>
</urn:RemoveInscriptionRequest>
```

9.2.2 Success response

```
<ns3:RemoveInscriptionResponse Id="Id-XXXXXX" InResponseTo="idRequest" IssueInstant="2020-06-05T11:04:01.688+02:00" xmlns:ns2="urn:be:fgov:health:commons:core:v2" xmlns:ns3="urn:be:fgov:health:rn:inscriptionservice:protocol:v1" xmlns:ns5="urn:be:fgov:health:rn:registries:commons:v1" xmlns:ns6="urn:be:fgov:health:rn:commons:business:v1" xmlns:ns7="urn:be:fgov:health:errors:soa:v1" xmlns:ns8="urn:be:fgov:health:errors:service:v1">
  <ns2:Status>
    <ns2:StatusCode Value="urn:be:fgov:health:2.0:status:Success"/>
  </ns2:Status>
```




```

<ns3:Ssin Replacing="false">12345678910</ns3:Ssin>
</ns3:RemoveInscriptionResponse>

```

9.2.3 Business error response

```

<ns3:RemoveInscriptionResponse Id="Id-XXXXXX" InResponseTo="id1" IssueInstant="2020-06-
05T13:47:17.454+02:00" xmlns:ns2="urn:be:fgov:ehhealth:commons:core:v2" xmlns:ns3="urn:be:
fgov:ehhealth:rn:inscriptionservice:protocol:v1" xmlns:ns5="urn:be:fgov:ehhealth:rn:registr
ies:commons:v1" xmlns:ns6="urn:be:fgov:ehhealth:rn:commons:business:v1" xmlns:ns7="urn:be:
fgov:ehhealth:errors:soa:v1" xmlns:ns8="urn:be:fgov:ehhealth:errors:service:v1">
  <ns2:Status>
    <ns2:StatusCode Value="urn:be:fgov:ehhealth:2.0:status:Requester">
      <ns2:StatusCode Value="urn:be:fgov:ehhealth:2.0:status:InvalidInput"/>
    </ns2:StatusCode>
    <ns2:StatusMessage>No inscription exists</ns2:StatusMessage>
  </ns2:Status>

```

9.2.4 Technical error response

```

<ns5:RemoveInscriptionResponse Id="Id-
XXXXXX" InResponseTo="idRequest" IssueInstant="2020-02-
28T15:20:50.190+01:00" xmlns:ns2="urn:be:fgov:ehhealth:commons:core:v2" xmlns:ns4="urn:be:
fgov:ehhealth:rn:inscriptionservice:core:v1" xmlns:ns5="urn:be:fgov:ehhealth:rn:inscription
service:protocol:v1" xmlns:ns6="urn:be:fgov:ehhealth:rn:registries:commons:v1" xmlns:ns7="
urn:be:fgov:ehhealth:rn:commons:business:v1" xmlns:ns8="urn:be:fgov:ehhealth:errors:soa:v1"
xmlns:ns9="urn:be:fgov:ehhealth:errors:service:v1">
  <ns2:Status>
    <ns2:StatusCode Value="urn:be:fgov:ehhealth:2.0:status:Responder"/>
    <ns2:StatusMessage>Received technical error from CBSS</ns2:StatusMessage>
    <ns2:StatusDetail>
      <ns7:Message>
        < ns7:Severity>FATAL</ns7:Severity>
        < ns7:ReasonCode>MSG00003</ns7:ReasonCode>
        < ns7:Diagnostic>Internal error</ns7:Diagnostic>
        < ns7:AuthorCode>http://www.ksz-bcss.fgov.be/</ns7:AuthorCode>
      </ns7:Message>
    </ns2:StatusDetail>
  </ns2:Status>
</ns5:SearchPersonPhoneticallyResponse >

```

9.3 GetExpiringInscriptions

9.3.1 Request

```
<urn:GetExpiringInscriptionsRequest Id="idRequest" IssueInstant="2024-02-20T11:40:28.784+01:00" MaxElements="100" Offset="0">
  <urn:ApplicationId>XXXXXXXXXXXX</urn:ApplicationId>
  <urn:EndDate>2024-01-01</urn:EndDate>
</urn:GetExpiringInscriptionsRequest>
</soapenv:Body>
</soapenv:Envelope>
```

9.3.2 Success response

```
<SOAP-ENV:Envelope xmlns:SOAP-ENV="http://schemas.xmlsoap.org/soap/envelope/">
  <SOAP-ENV:Header/>
  <SOAP-ENV:Body>
    <ns2:GetExpiringInscriptionsResponse xmlns:ns10="urn:be:fgov:ehealth:errors:service:v1"
    xmlns:ns11="http://kszbcss.fgov.be/intf/InscriptionService/v1"
    xmlns:ns2="urn:be:fgov:ehealth:rn:inscriptionservice:protocol:v1"
    xmlns:ns4="urn:be:fgov:ehealth:commons:core:v2"
    xmlns:ns5="urn:be:fgov:ehealth:commons:protocol:v2"
    xmlns:ns6="urn:be:fgov:ehealth:monitoring:protocol:v2"
    xmlns:ns7="urn:be:fgov:ehealth:rn:registries:commons:v1"
    xmlns:ns8="urn:be:fgov:ehealth:rn:commons:business:v1"
    xmlns:ns9="urn:be:fgov:ehealth:errors:soa:v1"
    xmlns:xmime="http://www.w3.org/2005/05/xmlmime" Id="Id-dfaad465d4c15e9a2c4e4a38" InResponseTo="id1" IssueInstant="2024-02-20T14:36:31.922+01:00" MaxElements="5" Offset="0" TotalElements="8">
      <ns4:Status>
        <ns4:StatusCode Value="urn:be:fgov:ehealth:2.0:status:Success"/>
      </ns4:Status>
      <ns2:Ssin EndDate="2024-02-20" StartDate="2014-01-16"> XXXXXXXXXXXX0</ns2:Ssin>
      <ns2:Ssin EndDate="2024-04-12" StartDate="2014-01-12"> XXXXXXXXXXXX1</ns2:Ssin>
    </ns2:GetExpiringInscriptionsResponse>
  </SOAP-ENV:Body>
</SOAP-ENV:Envelope>
```

9.4 GetInscriptions

9.4.1 Request

```
<urn:GetInscriptionsRequest Id="idRequest" IssueInstant="2024-02-16T13:20:01.675+01:00">
  <urn:ApplicationId>XXXXXXXXXXXX</urn:ApplicationId>
  <urn:Criteria>
    <Ssin>XXXXXXXXXX0</Ssin>
    <Ssin>XXXXXXXXXX1</Ssin>
  </urn:Criteria>
</urn:GetInscriptionsRequest>
</soapenv:Body>
</soapenv:Envelope>
```

9.4.2 Success response

```
<ns2:GetInscriptionsResponse xmlns:ns10="urn:be:fgov:ehealth:errors:service:v1"
  xmlns:ns11="http://kszbcss.fgov.be/intf/InscriptionService/v1"
  xmlns:ns2="urn:be:fgov:ehealth:rn:inscriptionservice:protocol:v1"
  xmlns:ns4="urn:be:fgov:ehealth:commons:core:v2"
  xmlns:ns5="urn:be:fgov:ehealth:commons:protocol:v2"
  xmlns:ns6="urn:be:fgov:ehealth:monitoring:protocol:v2"
  xmlns:ns7="urn:be:fgov:ehealth:rn:registries:commons:v1"
  xmlns:ns8="urn:be:fgov:ehealth:rn:commons:business:v1"
  xmlns:ns9="urn:be:fgov:ehealth:errors:soa:v1"
  xmlns:xmime="http://www.w3.org/2005/05/xmlmime" Id="Id-
f152cf65984dbf55fc33be0c" InResponseTo="idRequest" IssueInstant="2024-02-
16T13:20:02.182+01:00">
  <ns4:Status>
    <ns4:StatusCode Value="urn:be:fgov:ehealth:2.0:status:Success"/>
  </ns4:Status>
  <ns2:Ssin EndDate="2024-02-20" StartDate="2014-01-16" State="active">
XXXXXXXXXXXX0</ns2:Ssin>
  <ns2:Ssin EndDate="2024-04-12" StartDate="2014-01-12" State="expired">
XXXXXXXXXXXX1</ns2:Ssin>
</ns2:GetInscriptionsResponse>
```

10. Test cases

In this section, you will find test cases to verify the implementation of your service for the methods *AddInscription* and *RemoveInscription*. We will not provide any test cases for the methods *getExpiringInscriptions* and *getInscriptions*.

10.1 Register a person

<i>Description</i>	The user registers a person in order to receive mutations.
<i>Input</i>	SSIN: 70481606005
<i>Expected outputs</i>	<p>The service returns success response.</p> <pre><SOAP-ENV:Envelope xmlns:SOAP-ENV="http://schemas.xmlsoap.org/soap/envelope/"> <SOAP-ENV:Header/> <SOAP-ENV:Body> <ns3:AddInscriptionResponse Id="Id-6c4e895fb56c5be00c7bb96d" InResponseTo="id1" IssueInstant="2020-10-16T09:40:30.774+02:00" xmlns:ns2="urn:be:fgov:health:commons:core:v2" xmlns:ns3="urn:be:fgov:health:rn:inscriptionservice:protocol:v1" xmlns:ns4="urn:be:fgov:health:rn:registries:commons:v1" xmlns:ns5="urn:be:fgov:health:rn:commons:business:v1" xmlns:ns7="urn:be:fgov:health:errors:soa:v1" xmlns:ns8="urn:be:fgov:health:errors:service:v1"> <ns2:Status> <ns2:StatusCode Value="urn:be:fgov:health:2.0:status:Success"/> </ns2:Status> <ns3:Ssin Replacing="false">70481606005</ns3:Ssin> </ns3:AddInscriptionResponse> </SOAP-ENV:Body> </SOAP-ENV:Envelope></pre>

10.2 Register a cancelled person

<i>Description</i>	The user registers a cancelled person.
<i>Input</i>	SSIN: 56000308828
<i>Expected outputs</i>	<p>The service returns a business error with the status: <i>data not found</i>.</p> <pre></"> <SOAP-ENV:Header/> <SOAP-ENV:Body> <ns3:AddInscriptionResponse Id="Id-6c47895f084ce92e4e30c33c" InResponseTo="id1" IssueInstant="2020-10-16T09:10:38.390+02:00" xmlns:ns2="urn:be:fgov:health:commons:core:v2" xmlns:ns3="urn:be:fgov:health:rn:inscriptionservice:protocol:v1" xmlns:ns4="urn:be:fgov:health:rn:registries:commons:v1" xmlns:ns5="urn:be:fgov:health:rn:commons:business:v1" xmlns:ns7="urn:be:fgov:health:errors:soa:v1" xmlns:ns8="urn:be:fgov:health:errors:service:v1"></pre>



	<pre> <ns2:Status> <ns2:StatusCode Value="urn:be:fgov:ehhealth:2.0:status:Requester"> <ns2:StatusCode Value="urn:be:fgov:ehhealth:2.0:status:DataNotFound"/> </ns2:StatusCode> <ns2:StatusMessage>SSIN cancelled</ns2:StatusMessage> </ns2:Status> <ns3:Ssin Replacing="false">56000308828</ns3:Ssin> </ns3:AddInscriptionResponse> </SOAP-ENV:Body> </SOAP-ENV:Envelope> </pre>
--	--

10.3 Register a replaced person

<i>Description</i>	The user registers a person whose SSIN has been replaced by another SSIN.
<i>Input</i>	SSIN: 49242300517
<i>Expected outputs</i>	<p>The service returns the current SSIN to the user.</p> <p><u>Note:</u> The previous SSIN will be not registered and you need to call the operation <i>AddInscription</i> with the current SSIN to receive mutations.</p> <pre> <SOAP-ENV:Envelope xmlns:SOAP-ENV="http://schemas.xmlsoap.org/soap/envelope/"> <SOAP-ENV:Header/> <SOAP-ENV:Body> <ns3:AddInscriptionResponse Id="Id-7048895fd954e6eb2a7cdfdb" InResponseTo="id1" IssueInstant="2020-10-16T09:14:58.017+02:00" xmlns:ns2="urn:be:fgov:ehhealth:commons:core:v2" xmlns:ns3="urn:be:fgov:ehhealth:rn:inscriptionservice:protocol:v1" xmlns:ns4="urn:be:fgov:ehhealth:rn:registries:commons:v1" xmlns:ns5="urn:be:fgov:ehhealth:rn:commons:business:v1" xmlns:ns7="urn:be:fgov:ehhealth:errors:soa:v1" xmlns:ns8="urn:be:fgov:ehhealth:errors:service:v1"> <ns2:Status> <ns2:StatusCode Value="urn:be:fgov:ehhealth:2.0:status:Success"/> </ns2:Status> <ns3:Ssin Replacing="true">49442002236</ns3:Ssin> </ns3:AddInscriptionResponse> </SOAP-ENV:Body> </SOAP-ENV:Envelope> </pre>

10.4 Register a person that does NOT exist in CBSS register

<i>Description</i>	The user registers a person that does not exist in CBSS register.
<i>Input</i>	SSIN: 81490230530



<p><i>Expected outputs</i></p>	<p>The service returns a business error with the status: SSIN cancelled.</p> <pre data-bbox="387 241 1528 954"> <SOAP-ENV:Envelope xmlns:SOAP-ENV="http://schemas.xmlsoap.org/soap/envelope/"> <SOAP-ENV:Header/> <SOAP-ENV:Body> <ns3:AddInscriptionResponse Id="Id-1f4e895f07634bdfec102a33" InResponseTo="id1" IssueInstant="2020-10-16T09:39:13.288+02:00" xmlns:ns2="urn:be:fgov:ehealth:commons:core:v2" xmlns:ns3="urn:be:fgov:ehealth:rn:inscriptionservice:protocol:v1" xmlns:ns4="urn:be:fgov:ehealth:rn:registries:commons:v1" xmlns:ns5="urn:be:fgov:ehealth:rn:commons:business:v1" xmlns:ns7="urn:be:fgov:ehealth:errors:soa:v1" xmlns:ns8="urn:be:fgov:ehealth:errors:service:v1"> <ns2:Status> <ns2:StatusCode Value="urn:be:fgov:ehealth:2.0:status:Requester"> <ns2:StatusCode Value="urn:be:fgov:ehealth:2.0:status:DataNotFound"/> </ns2:StatusCode> <ns2:StatusMessage>SSIN unknown</ns2:StatusMessage> </ns2:Status> </ns3:AddInscriptionResponse> </SOAP-ENV:Body> </SOAP-ENV:Envelope> </pre>
--------------------------------	---

10.5 Register a person with an invalid identifier

<p><i>Description</i></p>	<p>The user registers a person with an invalid identifier.</p>
<p><i>Input</i></p>	<p>SSIN: 56000308818</p>
<p><i>Expected outputs</i></p>	<p>The service returns a business error with the status: <i>Invalid input</i>.</p> <pre data-bbox="387 1281 1528 1971"> <SOAP-ENV:Envelope xmlns:SOAP-ENV="http://schemas.xmlsoap.org/soap/envelope/"> <SOAP-ENV:Header/> <SOAP-ENV:Body> <ns3:AddInscriptionResponse Id="Id-ba4d895ffa6aca00180b4e9c" InResponseTo="id1" IssueInstant="2020-10-16T09:37:31.760+02:00" xmlns:ns2="urn:be:fgov:ehealth:commons:core:v2" xmlns:ns3="urn:be:fgov:ehealth:rn:inscriptionservice:protocol:v1" xmlns:ns4="urn:be:fgov:ehealth:rn:registries:commons:v1" xmlns:ns5="urn:be:fgov:ehealth:rn:commons:business:v1" xmlns:ns7="urn:be:fgov:ehealth:errors:soa:v1" xmlns:ns8="urn:be:fgov:ehealth:errors:service:v1"> <ns2:Status> <ns2:StatusCode Value="urn:be:fgov:ehealth:2.0:status:Requester"> <ns2:StatusCode Value="urn:be:fgov:ehealth:2.0:status:InvalidInput"/> </ns2:StatusCode> <ns2:StatusMessage>The Ssin is malformed</ns2:StatusMessage> </ns2:Status> </ns3:AddInscriptionResponse> </SOAP-ENV:Body> </SOAP-ENV:Envelope> </pre>

10.6 Remove a registered person

<i>Description</i>	The user removes a registered person Remark: Execute the test case 10.1 before executing this one.
<i>Input</i>	SSIN: 81490230530
<i>Expected outputs</i>	The service returns success response. <pre><SOAP-ENV:Envelope xmlns:SOAP-ENV="http://schemas.xmlsoap.org/soap/envelope/"> <SOAP-ENV:Header/> <SOAP-ENV:Body> <ns3:AddInscriptionResponse Id="Id-6c4e895fb56c5be00c7bb96d" InResponseTo="id1" IssueInstant="2020-10-16T09:40:30.774+02:00" xmlns:ns2="urn:be:fgov:ehealth:commons:core:v2" xmlns:ns3="urn:be:fgov:ehealth:rn:inscriptionservice:protocol:v1" xmlns:ns4="urn:be:fgov:ehealth:rn:registries:commons:v1" xmlns:ns5="urn:be:fgov:ehealth:rn:commons:business:v1" xmlns:ns7="urn:be:fgov:ehealth:errors:soa:v1" xmlns:ns8="urn:be:fgov:ehealth:errors:service:v1"> <ns2:Status> <ns2:StatusCode Value="urn:be:fgov:ehealth:2.0:status:Success"/> </ns2:Status> <ns3:Ssin Replacing="false">81490230530</ns3:Ssin> </ns3:AddInscriptionResponse> </SOAP-ENV:Body> </SOAP-ENV:Envelope></pre>

10.7 Remove a NOT registered person

<i>Description</i>	The user removes a NOT registered person. Remark: Execute the test case 10.6 before executing this one.
<i>Input</i>	SSIN: 81490230530

Expected outputs

The service returns a business error with the status: *Invalid Input*.

```
<SOAP-ENV:Envelope xmlns:SOAP-ENV="http://schemas.xmlsoap.org/soap/envelope/">
  <SOAP-ENV:Header/>
  <SOAP-ENV:Body>
    <ns3:RemoveInscriptionResponse Id="Id-fa50895f9072c73259a8982f" InResponseTo="id1" IssueInstant="2020-10-16T09:51:24.507+02:00" xmlns:ns2="urn:be:fgov:ehealth:commons:core:v2" xmlns:ns3="urn:be:fgov:ehealth:rn:inscriptionservice:protocol:v1" xmlns:ns4="urn:be:fgov:ehealth:rn:registries:commons:v1" xmlns:ns5="urn:be:fgov:ehealth:rn:commons:business:v1" xmlns:ns7="urn:be:fgov:ehealth:errors:soa:v1" xmlns:ns8="urn:be:fgov:ehealth:errors:service:v1">
      <ns2:Status>
        <ns2:StatusCode Value="urn:be:fgov:ehealth:2.0:status:Requester">
          <ns2:StatusCode Value="urn:be:fgov:ehealth:2.0:status:InvalidInput"/>
        </ns2:StatusCode>
        <ns2:StatusMessage>No inscription exists</ns2:StatusMessage>
      </ns2:Status>
    </ns3:RemoveInscriptionResponse>
  </SOAP-ENV:Body>
</SOAP-ENV:Envelope>
```

